

EXTREME xp6000 5W/30

API SN ACEA C3

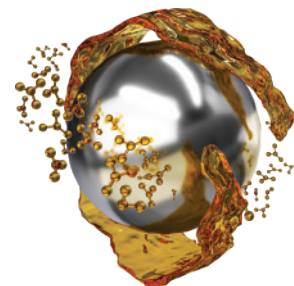
Doill Automobile - Vehicle Oil

Motor Oil

Fully-Synthetic

Usage

Doill EXTREME xp6000 5W/30 is a fully synthetic engine oil that is fully compatible with the latest diesel particulate filters (DPFs) in diesel vehicles and catalytic converters (CATs) in gasoline vehicles. **Doill EXTREME xp6000 5W/30** is an engine oil produced as a special mixture with Titanium - Gold Alloy Tech technology that provides high film making, ultra lubrication and high compressor efficiency. Thanks to its high TBN value, it provides a high level of cleaning inside the engine and long service mileage. **Doill EXTREME xp6000 5W/30** is designed to provide superior performance and ultra protection, as well as helping to benefit fuel economy. It is recommended for vehicles with Stop-Start. Suitable for Diesel, Gasoline and LPG vehicles.



Performance

Doill EXTREME xp6000 5W/30 fully synthetic motor oil, the performances it provides in your vehicle:

- Independently tested to the highest standards
- Recommended by the world's leading automobile manufacturers.
- Thanks to Titanium Gold Alloy Tech technology, it makes a superior film on surfaces.
- Protects the engine throughout the entire discharge range, even under extreme pressure.
- Offers proven performance in a variety of driving conditions and temperatures.
- Compressor provides efficiency.
- With its full synthetic structure, it provides full lubrication at the first start, even in the coldest conditions.
- Thanks to its high TBN value, it makes your engine ultra clean.
- Extends the life of worn out engines.

Recommendation

- **Doill EXTREME xp6000 5W/30** can only be mixed with similar products
- Replace the product with professional support
- Before using the product, refer to the vehicle user manual.
- You can contact Doill for detailed information on product usage.

Meets or exceeds the following performance levels:

PERFORMANCE LEVEL

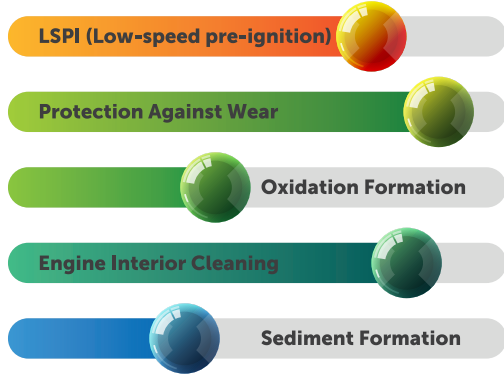
- API SN
- ACEA C3
- VW 504 00 / 507 00
- BMW Longlife-04
- MB 229.31 / 229.51 / 229.52
- PORCHE C30
- OV 040 1547 – D30 / G30



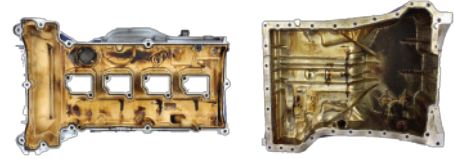
**SAE 5W/30
MOTOR OIL**

1 L | T244690422
4 L | T244690429
5 L | T244691200
208 L | T244691419

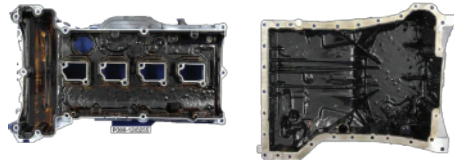
API SN PLUS PERFORMANCE LEVELS



EXTREME
ESP FORMULATION



Others



Features and Specifications

Viscosity Grade, SAE	5W/30
Kinematic Viscosity @ 100 °C, mm ² /s, ASTM D445	12.1
Kinematic Viscosity @ 40 °C, mm ² /s, ASTM D445	72,9
Viscosity Index, ASTM D2270	164
Pour Point, °C, ASTM D97	-42
Sulfated ash, Weight %, ASTM D874	0,84
HTHS Viscosity @ 150 C 1x10(6) sec(-1), Sheared, mPa.s, ASTM D4683	3.8
Total Base Number, mgKOH/g, ASTM D2896	8.1
Density @ 15 °C, g/cm ³ , ASTM D4052	0.85

Doill EXTREME xp6000 5W/30
13 January 2019

Doill, the Doill logo and related marks are trademarks of Doğan Boya Makine Ve Kimya Sanayi Limited Şirketi, used under license.

This data sheet and the information it contains is believed to be accurate as of the date of printing. However, no warranty or representation, express or implied, is made as to its accuracy or completeness. Data provided is based on standard tests under laboratory conditions and is given as a guide only. Users are advised to ensure that they refer to the latest version of this data sheet. It is the responsibility of the user to evaluate and use products safely, to assess suitability for the intended application and to comply with all applicable laws and regulations. Material Safety Data Sheets are available for all our products and should be consulted for appropriate information regarding storage, safe handling, and disposal of the product. No responsibility is taken by for any damage or injury resulting from abnormal use of the material, from any failure to adhere to recommendations, or from hazards inherent in the nature of the material. All products, services and information supplied are provided under our standard conditions of sale. You should consult our local representative if you require any further information you can call +90 850 302 41 40

Lubricants Are Our Business

Contact Us: +90 850 302 41 40

www.doill.com.tr

e-mail: info@doill.com.tr