



# GEARPLUS AXLE 1000 XR 90W

API GL-4

Doill Manual Gear Oil

Transfer case and Gear Oil

Mineral

Usage

**Doill GEARPLUS AXLE 1000 XR 90W** is a manual transmission oil formulated with highly refined base oils and superior additives, providing superior performance and protection at high gear shifts according to all seasons. The stability and durability of **Doill GEARPLUS AXLE 1000 XR 90W** make it the right choice in application areas with API GL-4 service recommendation SAE 90W viscosity level.

Performance

The advantages offered by Doill in manual transmission transitions:

- API GL-4

Suggestions

**Doill GEARPLUS AXLE 1000 XR 90W**, an only be mixed with liquids of similar properties Replace the product with professional assistance. Before using the product, refer to the vehicle owner's manual. You can contact Doill for detailed information about the use of the product.

## Features and Specifications

Density @ 15 °C, g/cm <sup>3</sup> , ASTM D4052	0.868
Kinematic Viscosity @ 100 °C, mm <sup>2</sup> /s, ASTM D445	15
Kinematic Viscosity @ 40 °C, mm <sup>2</sup> /s, ASTM D445	156
Viscosity Index, ASTM D2270	96
Color, Apparance, ASTM D1500	Sarı
Flash Point, °C, Cleveland Açık Kap, ASTM D 92	225
Pour Point, °C, ASTM D 97	- 18

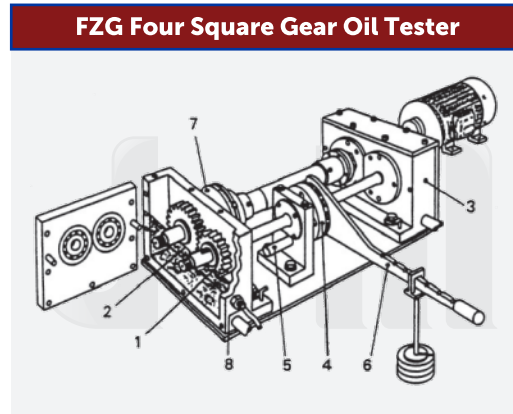
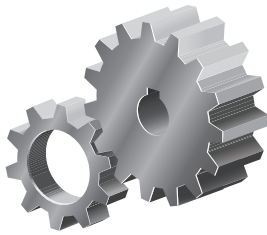
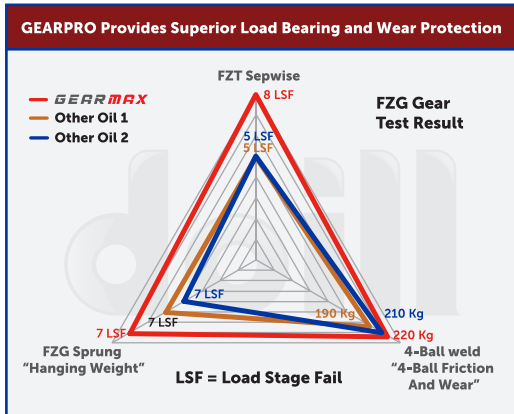
## Features and Specifications

**GEARPLUS**  
AXLE 1000 XR **90W**

GAERMAX SERIES

Meets or exceeds the following performance levels:

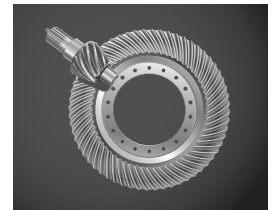
OEM GROUP	SPESIFICATION
SAE	90W
API	GL-4



1. Test Pawn
2. Test Wheel
3. Drive Gear Box
4. Rotary Coupling
5. Locking Pin
6. Load Handle With Weight
7. Torque Indicator
8. Temperature Sensor



Manual Transmission



Bevel Gear

GEARPLUS AXLE 1000 XR 90W

01 December 2021

Doill, the Doill logo and related marks are trademarks of Doğan Boya Makine Ve Kimya Sanayi Limited Şirketi, used under license.

This data sheet and the information it contains is believed to be accurate as of the date of printing. However, no warranty or representation, express or implied, is made as to its accuracy or completeness. Data provided is based on standard tests under laboratory conditions and is given as a guide only. Users are advised to ensure that they refer to the latest version of this data sheet. It is the responsibility of the user to evaluate and use products safely, to assess suitability for the intended application and to comply with all applicable laws and regulations. Material Safety Data Sheets are available for all our products and should be consulted for appropriate information regarding storage, safe handling, and disposal of the product. No responsibility is taken by for any damage or injury resulting from abnormal use of the material, from any failure to adhere to recommendations, or from hazards inherent in the nature of the material. All products, services and information supplied are provided under our standard conditions of sale. You should consult our local representative if you require any further information you can call +90 850 302 41 40

**Lubricant Is Our Business**

Contact Us: +90 850 302 41 40

[www.doill.com.tr](http://www.doill.com.tr)

e-mail: [info@doill.com.tr](mailto:info@doill.com.tr)

**doill**

Doğan Boya Makine ve Kimya Sanayi LTD. ŞTİ.  
All rights reserved.